

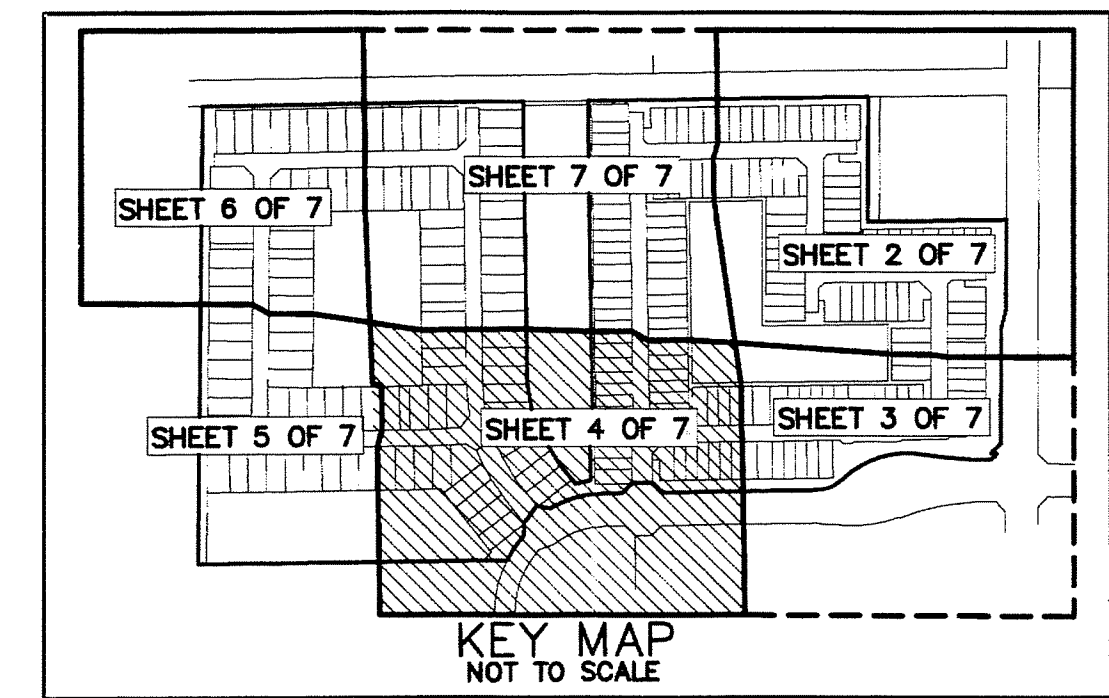
0930-004
 THIS INSTRUMENT PREPARED BY
 DAVID P. LINDLEY
 OF
CAULFIELD and WHEELER, INC.
 SURVEYORS - ENGINEERS - PLANNERS
 7900 GLADES ROAD, SUITE 100
 BOCA RATON, FLORIDA 33434 - (561)392-1991
 APRIL - 2013

VILLAGGIO ISLES PARCELS B AND C REPLAT

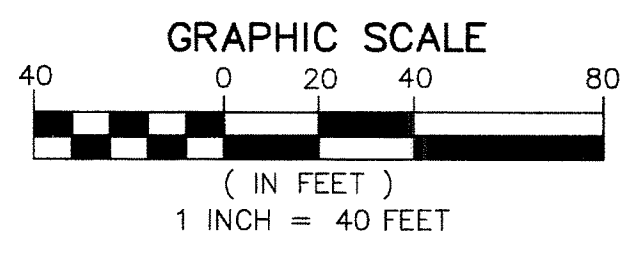
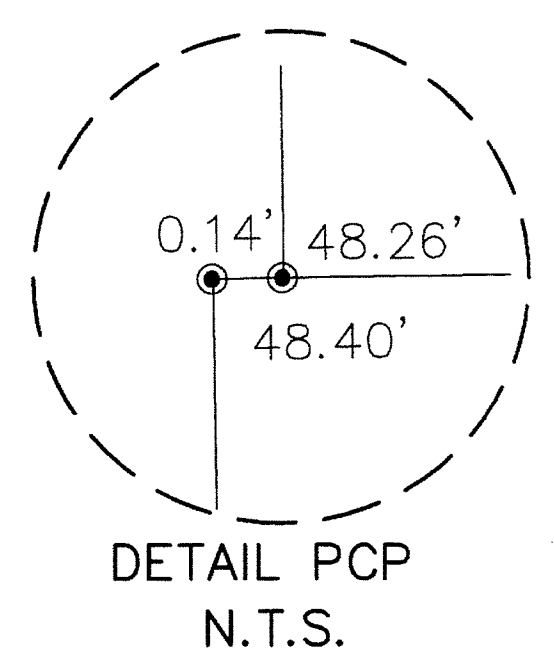
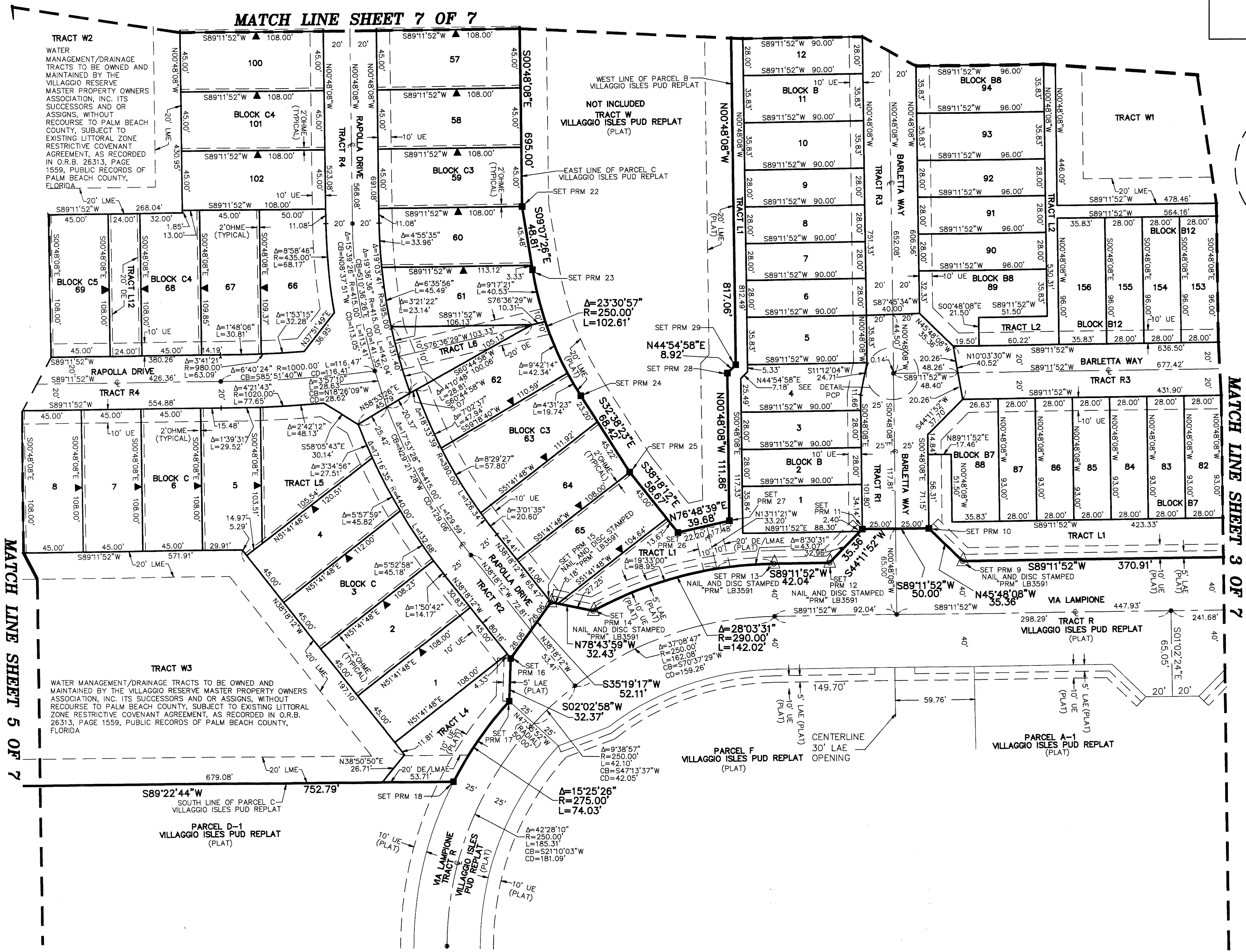
VILLAGGIO ISLES PUD, A PLANNED UNIT DEVELOPMENT
 BEING A REPLAT OF PARCEL B AND PARCEL C, VILLAGGIO ISLES PUD REPLAT,
 AS RECORDED PLAT BOOK 117, PAGES 102 THROUGH 109 OF THE PUBLIC RECORDS OF PALM BEACH COUNTY, FLORIDA
 LYING IN SECTION 16 TOWNSHIP 46 SOUTH, RANGE 42 EAST, PALM BEACH COUNTY, FLORIDA

119

STATE OF FLORIDA
 COUNTY OF PALM BEACH
 THIS PLAT WAS FILED FOR
 RECORD AT _____ M.
 THIS _____ DAY OF
 A.D. 20____ AND DULY RECORDED
 IN PLAT BOOK _____ ON
 PAGES _____ AND _____
 SHARON R. BOCK
 CLERK AND COMPTROLLER
 BY: _____
 DEPUTY CLERK



SHEET 4 OF 7



- LEGEND/ABBREVIATIONS**
- ⊕ CENTERLINE
 - Δ DELTA (CENTRAL ANGLE)
 - AC - ACRES
 - BDE - BUFFER DRAINAGE EASEMENT
 - CB - CHORD BEARING
 - CD - CHORD DISTANCE
 - DE - DRAINAGE EASEMENT
 - E - EASTING
 - FPL - FLORIDA POWER & LIGHT CO.
 - L - ARC LENGTH
 - LAE - LIMITED ACCESS EASEMENT
 - LB - LICENSED BUSINESS
 - LMAE - LAKE MAINTENANCE ACCESS EASEMENT
 - LME - LAKE MAINTENANCE EASEMENT
 - LSE - LIFT STATION EASEMENT
 - L.W.D.D. - LAKE WORTH DRAINAGE DISTRICT
 - N - NORTHING
 - OHME - OVERHANG/MAINTENANCE EASEMENT
 - O.R.B. - OFFICIAL RECORD BOOK
 - PBCUC - PALM BEACH COUNTY UTILITY EASEMENT
 - (PLAT) - INDICATES INDICATES PLAT BOOK 117, PAGE 102.
 - R - RADIUS
 - (R) - INDICATES RADIAL LINE
 - SF - SQUARE FEET
 - UE - UTILITY EASEMENT
 - ▲ INDICATES "ZERO" SIDE OF LOT LINE
 - PRM - DENOTES PERMANENT REFERENCE MONUMENT
 - 4" x 4" x 24" CONCRETE MONUMENT STAMPED LB3591
 - PCP - DENOTES PERMANENT CONTROL POINT
 - NAIL AND METAL DISK STAMPED LB3591
- NOTES**
- COORDINATES, BEARINGS AND DISTANCES**
- COORDINATES SHOWN ARE GRID
 DATUM = NAD 83 1990 ADJUSTMENT
 ZONE = FLORIDA EAST
 LINEAR UNIT = US SURVEY FEET
 COORDINATE SYSTEM 1983 STATE PLANE
 TRANSVERSE MERCATOR PROJECTION
 ALL DISTANCES ARE GROUND
 SCALE FACTOR = 1.000265
 GROUND DISTANCE X SCALE FACTOR = GRID DISTANCE
 BEARINGS AS SHOWN HEREON ARE GRID DATUM,
 NAD 83 1990 ADJUSTMENT, FLORIDA EAST ZONE.

COORDINATE TABLE

MONUMENT	NORTHING (N)	EASTING (E)
FOUND PRM 1	773866.05	929849.43
FOUND PRM 2	773674.90	929849.48
FOUND PRM 3	773587.95	929836.27
FOUND PRM 4	773317.94	929835.07
FOUND PRM 5	773293.04	929809.96
SET PRM 6	773290.79	929846.74
SET PRM 7	773229.51	929449.38
SET PRM 8	773201.52	929381.38
SET PRM 9	773196.33	929010.49
SET PRM 10	773200.95	927874.67
SET PRM 11	773220.27	928835.15
SET PRM 12	773194.93	928910.50
SET PRM 13	773194.34	928868.46
SET PRM 14	773156.34	928732.54
SET PRM 15	773154.66	928700.73
SET PRM 16	773122.16	928670.60
SET PRM 17	773089.80	928669.45
SET PRM 18	773029.12	928627.44
SET PRM 19	773020.95	927874.67
FOUND PRM 20	774148.84	927886.10
SET PRM 21	774159.80	928669.35
SET PRM 22	773464.85	928679.08
SET PRM 23	773416.86	928686.82
SET PRM 24	773321.46	928723.14
SET PRM 25	773263.84	928760.04
SET PRM 26	773217.80	928796.41
SET PRM 27	773326.86	928833.04
SET PRM 28	773336.71	928833.48
SET PRM 29	773345.03	928839.78
SET PRM 30	774162.03	928828.34
FOUND PRM 31	774171.61	929512.53
FOUND PRM 32	773863.87	929511.20